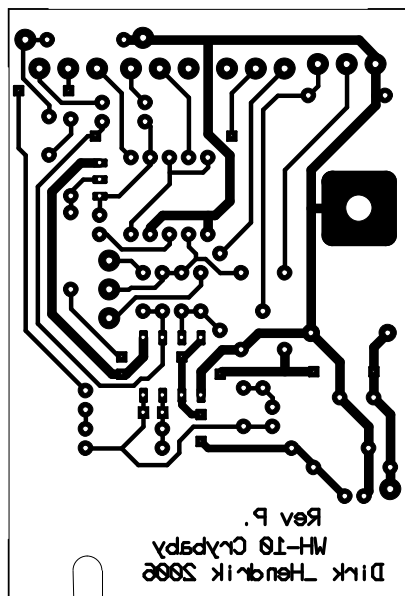


REV: P	DATE: 27 OKTOBER 2006	ENG: DIRK_HENDRIK
PROJECT: IBANEZ WH10 DUAL POT VERSION TO CRYBABY CASE		
COMPANY: ADDRESS: CITY: AMSTERDAM COUNTRY: HOLLAND		
INITIAL	24 OKTOBER 2006	PAGE: 1 OF: 1



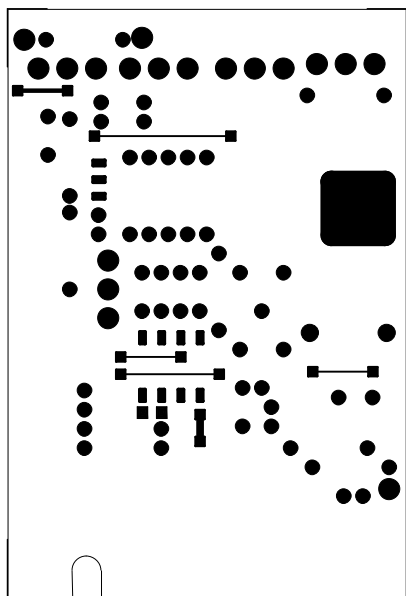
ULTIboard
PCB Design



WH10 Dual pot, Bottom (Jan. 08, 2009) (16:00) (DIRK_HENDRIK) SCALE: 100%
Drill Ref Pnt: 0.750, 4.250 (inch)



ULTIboard
PCB Design





ULTIboard
PCB Design

